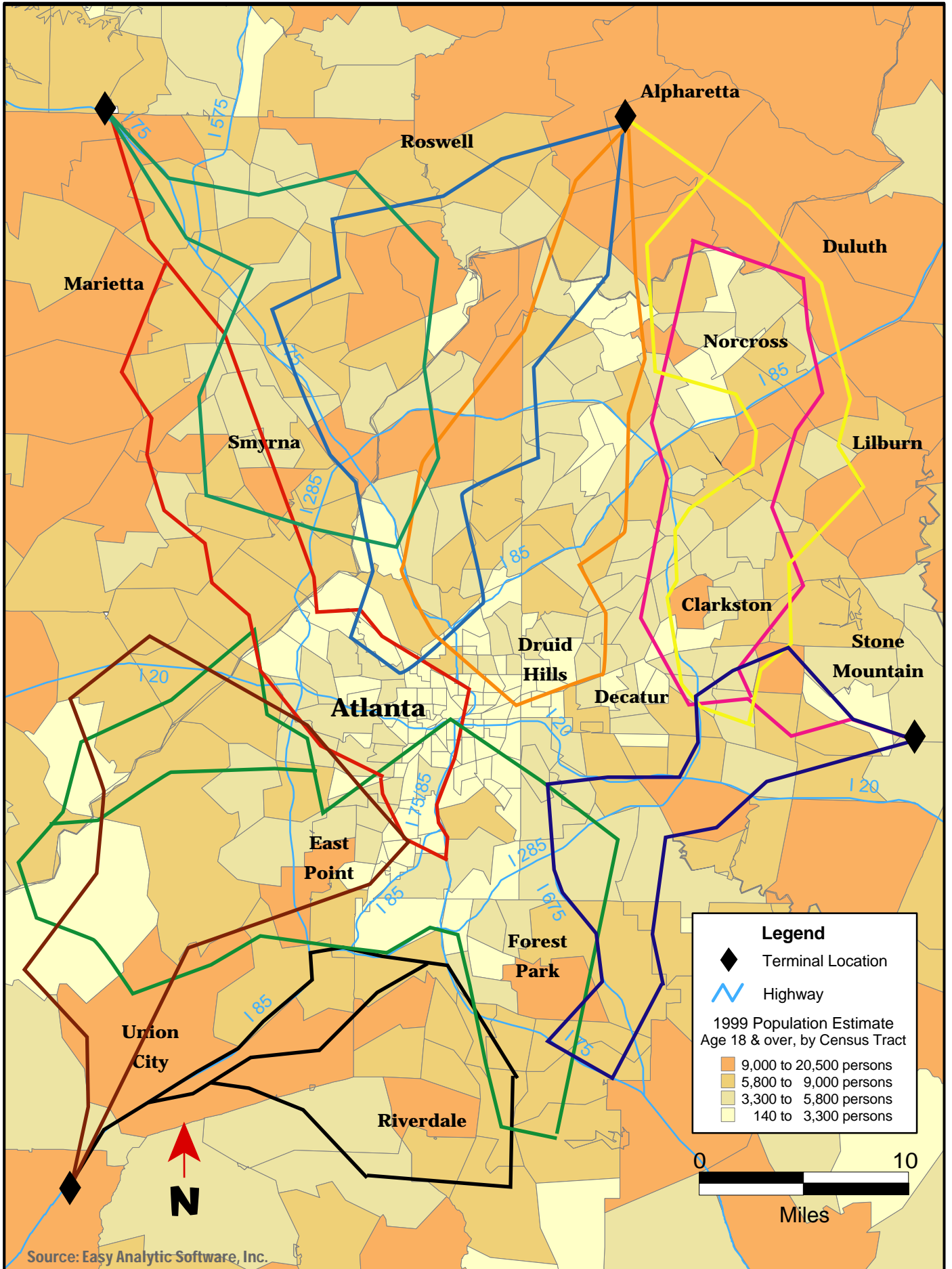


Typical Ten Truck Route - Atlanta



Legend

- ◆ Terminal Location
- ⚡ Highway

1999 Population Estimate
Age 18 & over, by Census Tract

- 9,000 to 20,500 persons
- 5,800 to 9,000 persons
- 3,300 to 5,800 persons
- 140 to 3,300 persons



Source: Easy Analytic Software, Inc.